

Solarize Massachusetts Information Sheet (updated 6/21/17)

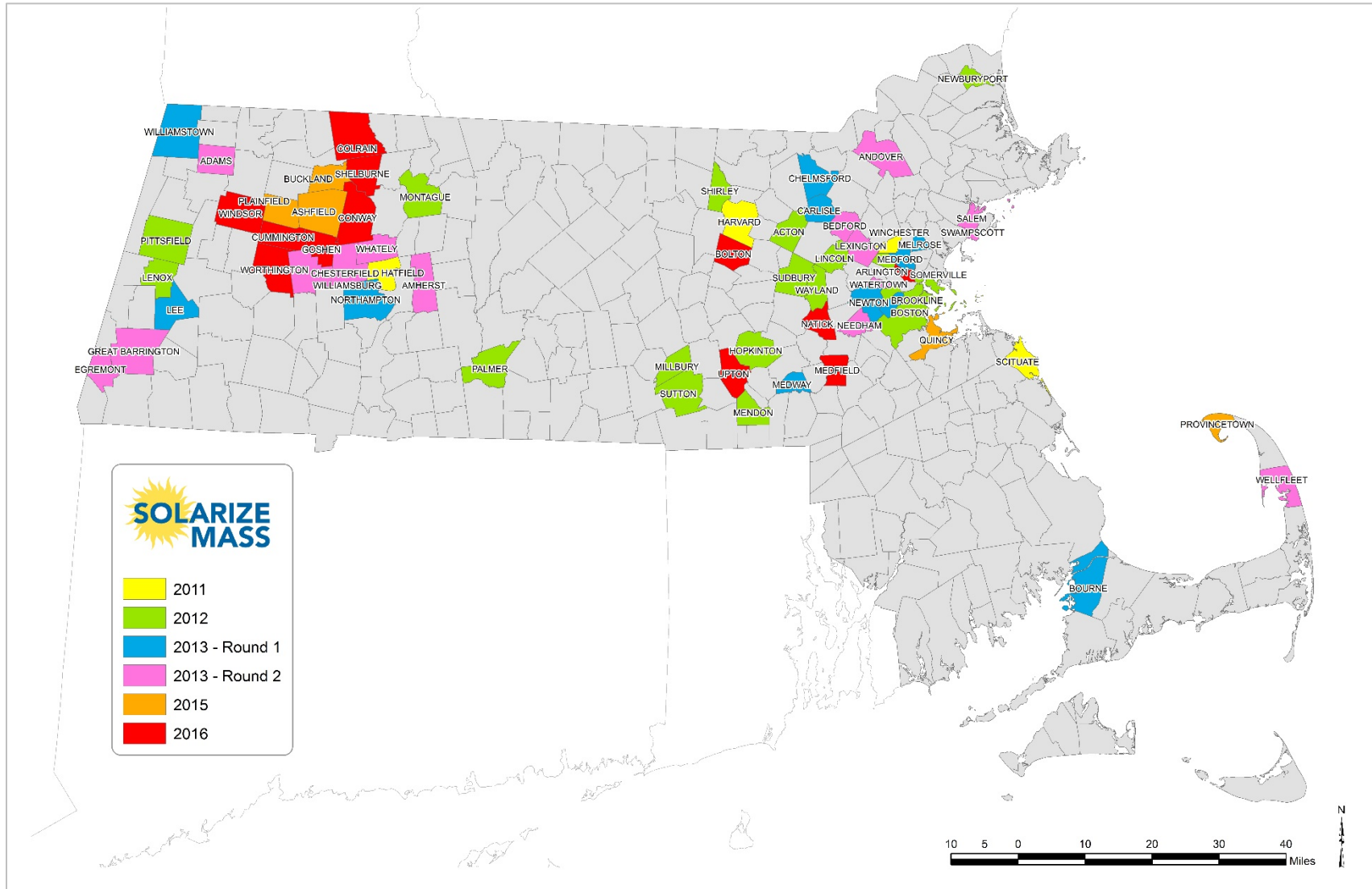


Figure 1. Map of all Solarize Mass communities, by program round.

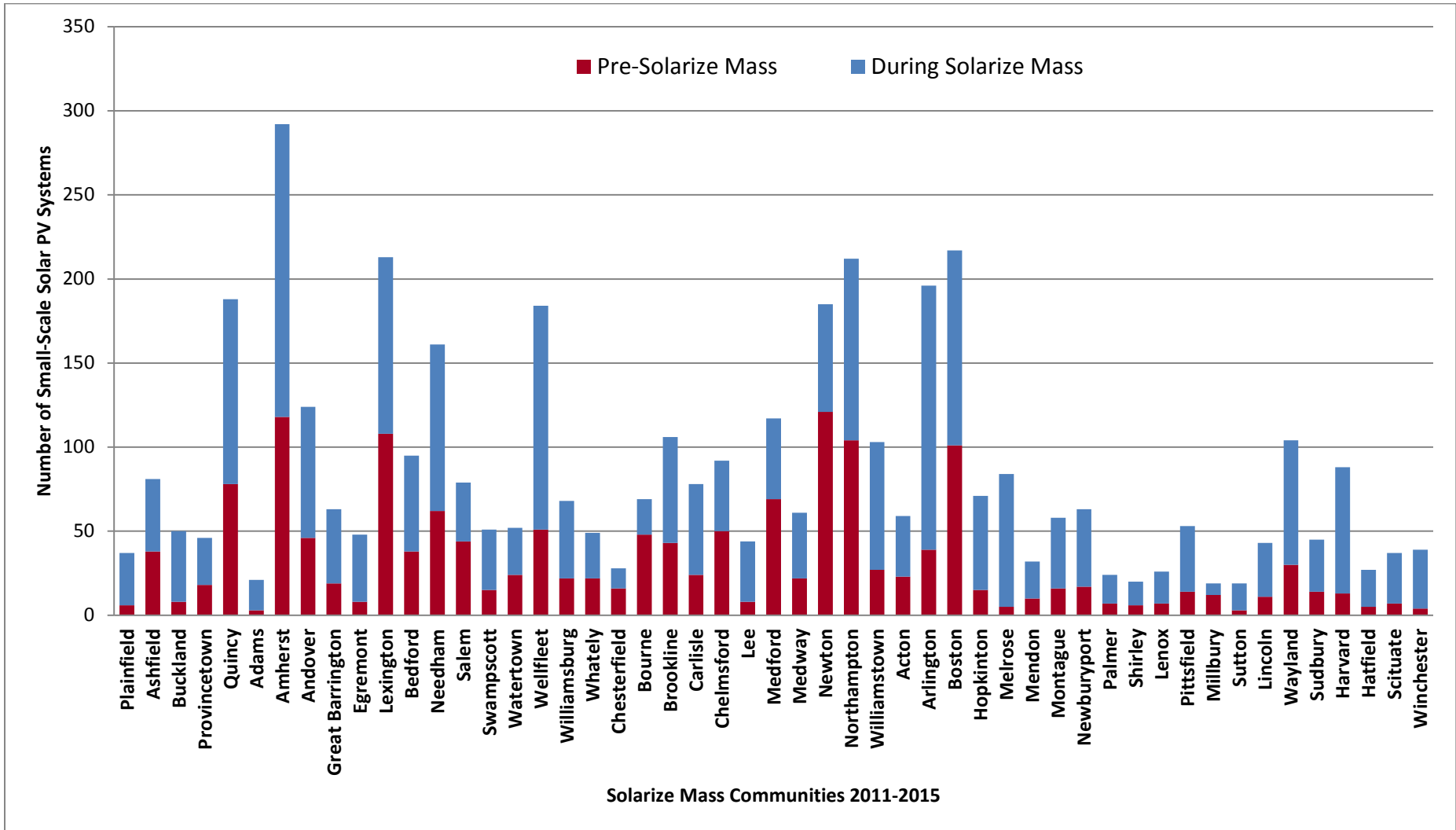


Figure 2. Number of solar PV systems 15 kW and smaller installed prior to Solarize Mass, and systems contracted during Solarize Mass, by community

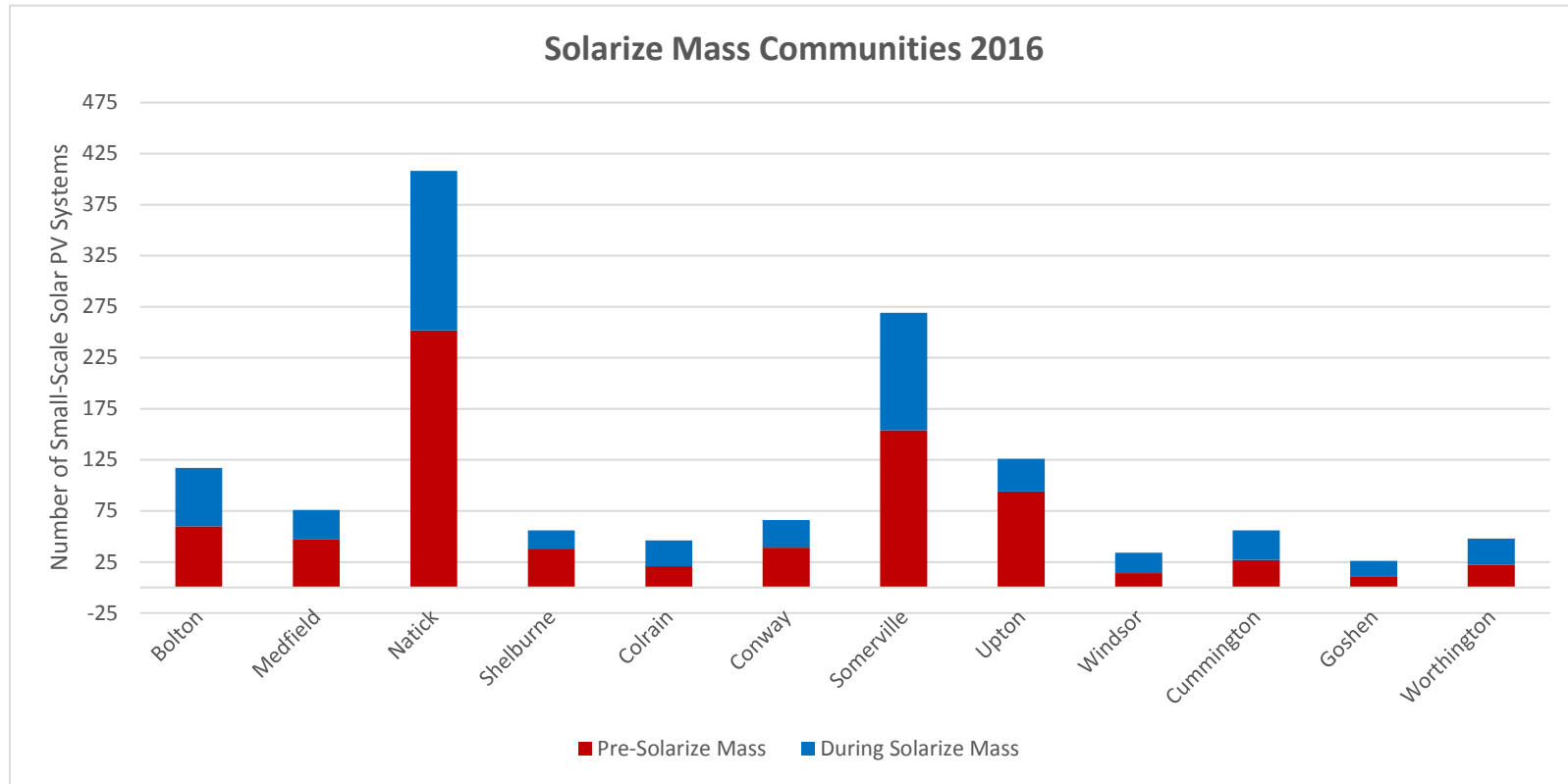
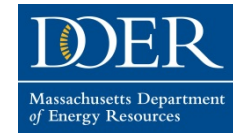


Figure 3. Number of solar PV systems 15 kW and smaller installed prior to Solarize Mass, and systems contracted during Solarize Mass, by community for the 2016 round of Solarize Mass



Solarize Mass Community By Program Round *	Installer**	Small-Scale Solar PV Contracted During Program***	Capacity Contracted During Program (kW)***	Small-scale Solar PV Installed Prior to SM program	Community Interest Leads
2016					
Bolton	SolarFlair Energy Inc.	57	460.42	60	222
Medfield	New England Clean Energy	29	259.14	47	211
Natick	The Boston Solar Company	156	1200.19	252	404
Shelburne	Solar Store of Greenfield, Grenergy Solar Store	18	128.07	38	114
Colrain	Solar Store of Greenfield, Grenergy Solar Store	25	172.14	21	141
Conway	Solar Store of Greenfield, Grenergy Solar Store	27	167.40	39	144
Somerville	SolarFlair Energy Inc.	115	568.63	154	381
Upton	SolarFlair Energy Inc.	32	264.45	94	104
Windsor	SunBug Solar	20	171.01	14	113
Cummington	SunBug Solar	29	252.14	27	97
Goshen	SunBug Solar	15	119.51	11	46
Worthington	SunBug Solar	26	224.13	22	77
2015					
Plainfield	Direct Energy Solar	31	220.01	6	132
Ashfield	Direct Energy Solar	43	307.90	38	194
Buckland	Direct Energy Solar	42	330.46	8	173
Provincetown	Cotuit, Blue Selenium, E2 Solar	28	267.83	18	197
Quincy	SolarFlair Energy Inc	110	622.33	78	925
2013 Round 2					
Adams	RGS Energy	18	100.63	3	130
Amherst	Northeast Solar Design Assoc.	174	1,195.00	118	609
Andover	Direct Energy Solar	78	653.75	46	327

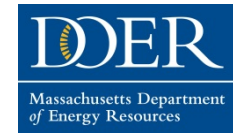


Great Barrington	RGS Energy	44	259.33	19	274
Egremont	RGS Energy	40	286.80	8	188
Lexington	Direct Energy Solar	105	733.02	108	527
Bedford	Direct Energy Solar	57	402.75	38	188
Needham	Direct Energy Solar	99	728.52	62	376
Salem	RGS Energy	35	215.43	44	177
Swampscott	RGS Energy	36	184.78	15	190
Watertown	Next Step Living	28	135.70	24	327
Wellfleet	Cotuit, Blue Selenium, E2 Solar	133	655.70	51	477
Williamsburg	RGS Energy	46	298.35	22	141
Whately	RGS Energy	27	198.43	22	64
Chesterfield	RGS Energy	12	92.40	16	72
2013 Round 1					
Bourne	Cotuit, E2 Solar	21	136.90	48	161
Brookline	SolarFlair Energy Inc.	63	345.60	43	461
Carlisle	SolarFlair Energy Inc.	54	381.50	24	201
Chelmsford	SolarFlair Energy Inc.	42	230.30	50	259
Lee	RGS Energy	36	293.80	8	167
Medford	SunBug	48	387.60	69	334
Medway	Second Generation Energy	39	488.60	22	301
Newton	SolarFlair Energy Inc.	64	308.80	121	431
Northampton	RGS Energy	108	705.70	104	512
Williamstown	RGS Energy	76	559.40	27	295
2012					
Acton	New England Clean Energy	36	188.23	23	435
Arlington	SolarFlair Energy Inc.	157	718.25	39	847
Boston	SolarCity	116	522.32	101	411
Hopkinton	SolarFlair Energy Inc.	56	367.62	15	366
Melrose	NRG Home Solar, Next Step Living	79	425.64	5	672
Mendon	SolarFlair Energy Inc.	22	170.75	10	260

Montague	Northeast Solar Design Assoc.	42	179.46	16	213
Newburyport	SunBug Solar	46	423.10	17	425
Palmer	Direct Energy Solar	17	150.00	7	162
Shirley	New England Clean Energy	14	69.61	6	237
Lenox	Direct Energy Solar	19	151.80	7	128
Pittsfield	Direct Energy Solar	39	313.50	14	267
Millbury	Second Generation Energy	7	43.00	12	130
Sutton	Second Generation Energy	16	141.20	3	208
Lincoln	Direct Energy Solar	32	313.80	11	119
Wayland	Direct Energy Solar	74	659.10	30	388
Sudbury	Direct Energy Solar	31	308.80	14	137
2011					
Harvard	New England Clean Energy	75	402.56	13	429
Hatfield	RGS Energy	22	147.00	5	134
Scituate	Rexel Energy Solutions	30	115.20	7	321
Winchester	RGS Energy	35	164.60	4	479
Program Round Totals					
2011 Total		162	829.36	29	1363
2012 Total		803	5146.18	330	5405
2013 Rd 1 Total		551	3838.20	516	3122
2013 Rd 2 Total		932	6140.59	596	4067
2015 Total		254	1748.53	148	1621
2016 Total		549	3987.23	779	2054
All Programs Total		3,251	21,690.09	2,398	17,632

Figure 4. Communities that have participated in the Solarize Mass program 2011 – 2016.

*Communities that have participated as a partnership are as follows: Lenox-Pittsfield, Millbury-Sutton, Lincoln-Wayland-Sudbury, Lexington-Bedford, Salem-Swampscott, Williamsburg-Whately-Chesterfield, Plainfield-Ashfield-Buckland, Shelburne-Colrain-Conway, and Windsor-Cummington-Goshen-Worthington



**The installer names listed are the most current company names, and may differ from the installer company name at the time of the program. As part of the 2011 round, New England Clean Energy was New England Breeze, RGS Energy was Alteris Renewables, and Rexel Energy Solutions was Munro Distributing. For the 2012 round, NRG Home Solar was Roof Diagnostics and Direct Energy Solar was Astrum Solar. For the 2013 rounds, RGS Energy was Real Goods Solar and Direct Energy Solar was Astrum Solar.

***Number of contracts signed and contracted capacity are based on the end of respective program sign-up period.